



## Samsung Napster YP-910 Player User Manual

Samsung Electronics America Inc.  
105 Challenger Road, Ridgefield Park, N.J. 07660

SERVICE DIVISION  
400 Valley Road, Suite 201  
Mount Arlington, NJ 07856  
TEL: 1-800-SAMSUNG (1-800-726-7864)

AH68-01380B (Rev 1.0)

### The Samsung Napster Player features:

20  
Storage  
Capacity

FM  
TUNER

FM  
Recording

MP3  
Recording

USB  
2.0

FMT  
Transmitter

Li-Ion  
polymer  
Long Life Time



• napster  
• compatible  
•

# Contents

## Safety Guidelines

Safety Instructions .....	4
Battery Charger Safety .....	6

## Introduction

Quick Start .....	7
Charging the battery .....	8
Samsung Napster Player Feature Overview .....	10
Napster Overview .....	12
System Requirements .....	13
Components.....	14
Location of Controls.....	15
Location of Controls (Remote Control) .....	16

## Installation and Setup

Installing the Napster Software .....	18
Registering for a Napster Account.....	19
Connecting your Samsung Napster Player to your PC .....	20

## Using Napster with Your Samsung Napster Player

Searching for and Purchasing Music.....	22
Importing Your Existing Music .....	24
Editing Track Data .....	26
Creating Playlists .....	28
Transferring Music to Your Samsung Napster Player .....	30
Accessing Music on Your Samsung Napster Player .....	33
Deleting Music on Your Samsung Napster Player.....	34
Managing Your Existing Playlists.....	35
Getting Help with Napster .....	36

## Using Your Samsung Napster Player

Playing Music.....	38
Adjusting Volume .....	39
Searching Within Music Files .....	40
Hold Feature .....	42
Menu Mode .....	43
Browsing Your Music .....	44
● Searching for and Adding Music Files .....	44
● Selecting a Playlist.....	46
Playing FM Radio .....	47
Playing Music Via FM Transmission .....	50
Recording From FM Radio .....	52
Recording MP3s .....	53
Uploading Recorded Files to a PC .....	55

## Additional Features

Shuffle and Repeat Playback .....	57
Equalizer Settings .....	58
Recording Settings .....	59
Screen Settings .....	60
Restoring Default Settings.....	62
Player Information .....	63










## Customer Support

Troubleshooting .....	64
Specifications.....	66
Communications Regulation Information.....	68
Warranty .....	70

# Safety Guidelines

## Safety Instructions

Please read and understand all the instructions to avoid injury to yourself and damage to the device

<p>Do not expose to extreme temperatures (above 95°F or below 23°F). Do not expose to moisture.</p> 	<p>Do not apply excessive pressure to the device. Do not drop the player.</p> 	<p>Do not let any foreign matter spill into the device.</p> 
<p>Do not place heavy objects on top of the device.</p> 	<p>Do not expose to chemicals such as benzene and thinners.</p> 	<p>Do not expose to direct sunlight or heat sources.</p> 
<p>Do not store in dusty areas.</p> 	<p>Do not try to disassemble and repair the device yourself.</p> 	<p>Do not use the unit near any appliance that generates a strong magnetic field.</p> 

## Earphones

### Follow Traffic Safety Instructions

- Do not use earphones while driving an automobile or riding a bicycle.
- It is not safe to listen at high volume while walking down the street, especially while crossing at intersections.

### Protect your ears

- Do not turn the volume too high. Doctors warn against prolonged exposure to high volume.
- If you have ringing in your ears, turn the volume down or discontinue listening.

## Ambient Operating Conditions

- Ambient temperature: 5°C ~ 35°C (41°F ~ 95°F)  
Humidity : 10 ~ 75%

## Environmental Information

- Follow local guidelines for waste disposal when discarding packages, batteries, and old electronic appliances.
- Your player is packaged with cardboard, polyethylene, etc. and does not use any unnecessary materials

## Battery Charger Safety



### CAUTION

RISK OF ELECTRIC SHOCK. DO NOT OPEN



The uninsulated parts inside the charger could cause electric shock.  
For your safety, do not open the case of the charger.



Read this User Manual to prevent any problems that may occur while using the charger.

### Warning

- Use the charger away from water sources to avoid fire or electric shock.

### Caution

- Use the charger only with a power outlet that matches the shape of the converter's plug to avoid electric shock.
- Make sure that the charger's plug is inserted all the way into the outlet.

## Introduction Quick Start

Here is a quick outline of the basic steps you need to take to get up and running with your Samsung Napster Player.

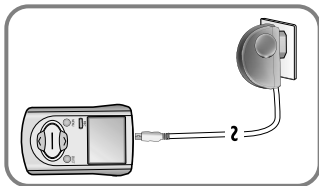
1. Charge the battery (see page 8).
2. Install the Napster software (see page 18).
3. Connect your Samsung Napster Player to your PC with a USB Cable (see page 20).
4. Transfer music to your Samsung Napster Player (see page 30).
5. Play music (see page 38).

# Charging the Battery

A charger is supplied with your Samsung Napster Player.

## Plug the charger into a wall outlet.

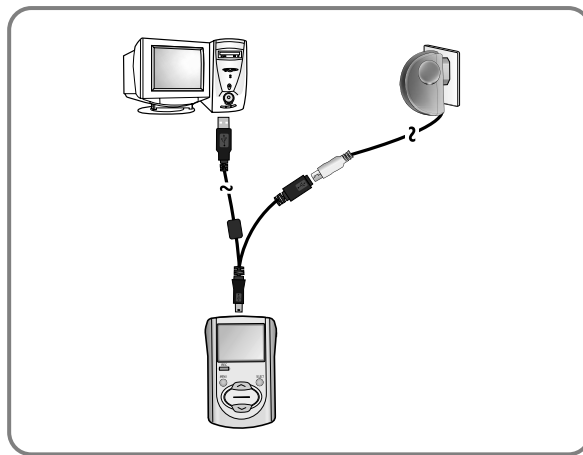
- Red light indicates that the battery is being charged.
- Green light indicates that the battery is fully charged after charging.
- If the red light starts to blink, please try again to connect the charger properly.



## Caution

- Do not charge longer than the specified charge time to avoid risk of fire.
- Do not plug several devices into the same outlet.
- Do not use a rechargeable battery or charger that is defective.
- When using the rechargeable battery for the first time or after several months of non-use, fully charge it first.
- Do not charge the rechargeable battery for more than 12 hours.
- Overcharging or overdischarging will reduce the battery life.
- The rechargeable battery is a consumable item and its capacity will decrease gradually.
- To prolong the life of your battery, use the fully charged battery until it is completely discharged, and then fully charge it again before use. If you charge the battery that is not completely drained, the battery operating time will decrease. In this case, fully cycle (fully charge and then fully discharge) the battery several times.
- Do not let metallic objects, such as necklaces or coins, come into contact with the terminals (metallic parts) of the charger and the built-in rechargeable battery. A fire or electric shock may result.

The rechargeable batteries drain quickly when you download or upload recorded files. Always use the charger when transferring files.



# Samsung Napster Player Feature Overview

## Fully Integrated with Napster

Transfer the tracks you purchase with Napster seamlessly to your Samsung Napster Player, and use Napster to access and manage your entire online collection.

## Mass Storage Hard Disk

You can use the built-in 20GB hard drive to store your entire music library, plus use it as an external drive on your PC to store other data files.

## MP3 Recording Capability

You can convert music from CDs, cassettes, and radio into MP3 files without a PC.

## Remote Playback Via FM Transmission

Play music through your car stereo with a built-in wireless FM transmitter.

## MP3 & WMA Playback

Your Samsung Napster Player supports playback of both MP3 and WMA.

## High Speed Transfer via USB

Maximum transfer speed of 120 Mbps.

## High-Fidelity Sound

The Samsung Napster Player has a built-in equalizer to adjust sound to your preference.

## Built-in Rechargeable Li-Polymer Battery

The built-in rechargeable lithium battery provides up to 10 hours of play time.

# Napster Overview

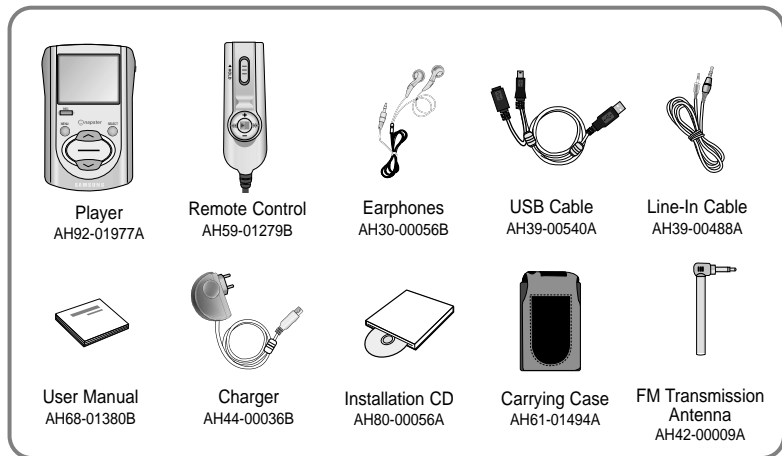
- Napster is the premier online music service that gives you instant access to over half a million tracks. Tracks purchased on Napster can be seamlessly transferred to your Samsung Napster Player.
- If you sign up for the Napster Premium service, you can also get unlimited streaming and downloading of tracks to play on your computer, as well as access to other Premium features.
- This user manual contains instructions for using your Samsung Napster Player with Napster. Additional help for Napster is available from the online User Guide and FAQs available from the Napster Help menu.

# System Requirements

Minimum system requirements are as follows:

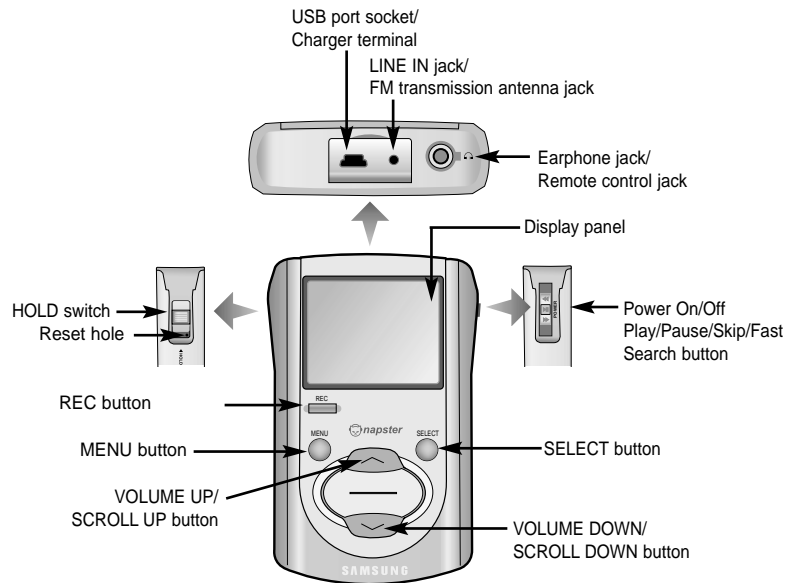
- Operating System: Windows 2000 or Windows XP  
Note : Napster is not supported on Macintosh or Windows 95, 98, NT, or ME.
- Processor: Pentium-class CPU equivalent or better
- Memory: 64MB of RAM minimum
- Hard Disk space: Approximately 9 to 12 MB for the Napster installer and 100 MB for Windows Media Player 9 Series (if not already installed)
- Sound card and speakers
- Browser: Microsoft Internet Explorer version 5.01 or higher  
Note : For IE 5.5 users, service pack 1 or higher is required.
- Windows Media Player 9 Series
- Active Internet connection  
(33.3 Kbps minimum, broadband/128+ Kbps recommended)
- USB Requirement: USB 2.0 required for maximum transfer rate
- CD-ROM Drive

# Components



- Car-lighter adapter is sold separately.
- The appearance of the accessories shown is subject to change for product improvement without prior notice.

# Location of Controls



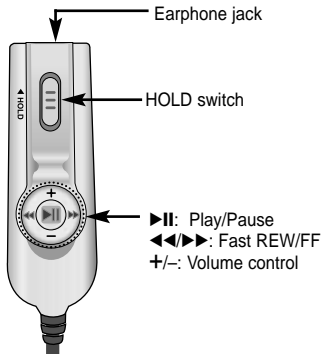
## Note

Reset the player by pressing the reset hole using a pointed object such as a safety clip.

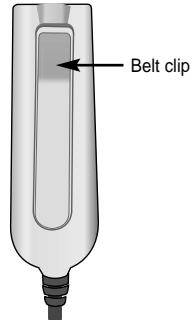


# Location of Controls (Remote Control)

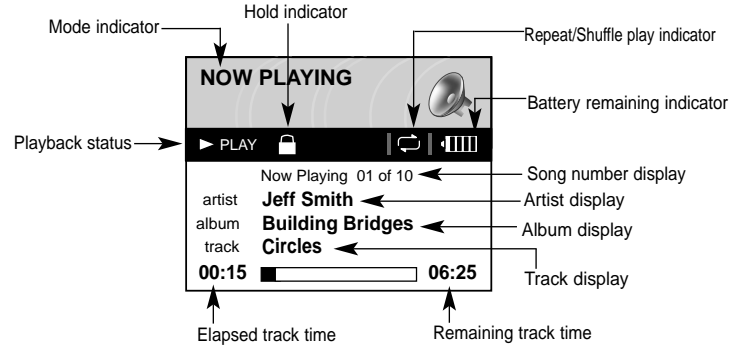
Front



Back



Display



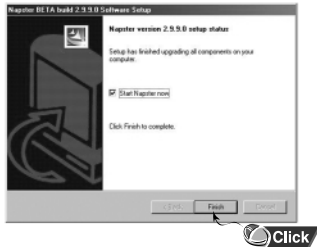
# Installation and Setup

## Installing the Napster Software

The Napster application is included with the installation CD that came with your Samsung Napster Player. Before you install the Napster software, review the system requirements on page 13. If you don't already have Windows Media Player 9, it will automatically be installed as part of the installation process.

### You will first need to install the Napster application:

1. Insert the installation CD that came with your Samsung Napster Player and follow the directions to install Napster.
2. Follow the on-screen instructions as the InstallShield Wizard guides you through the installation. When the installation has completed, click **[Finish]**.



## Registering for a Napster Account

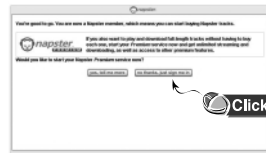
1. After you have completed the installation, create a member name and password. Enter the required information and click **[submit]**.

### Note

- If you already created your member name through a retailer's registration program, follow the **[Click here if you have already registered in-store or online]** link in the upper right corner.
- The Napster application that is included on the installation CD may not be the most current version of Napster, and you may be prompted to automatically update the Napster software. This ensures that you have the most up-to-date version of Napster, with all the latest features.



This completes your installation and registration of Napster. To find out more about the Napster Premium service click **[yes, tell me more]**. Otherwise, click **[no thanks, just sign me in]** to sign in to Napster and start purchasing tracks to transfer to your Samsung Napster Player.




# Connecting Your Samsung Napster Player to Your PC

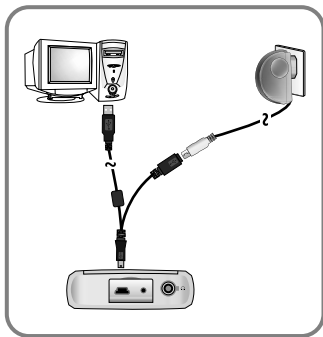
**1** Charge the battery on the Samsung Napster Player, and then press the On/Off button to turn on the power.

**2** Connect one end of the USB cable to the USB port on your PC.

**3** Open the Samsung Napster Player's upper door and connect the other end of the USB cable to the USB cable socket.

 Be sure to perform a safe removal before physically disconnecting the USB cable, otherwise your PC may malfunction.

For instructions on safely removing your device, see page 32.



Note

**Follow these steps to verify that your USB driver installed successfully:**

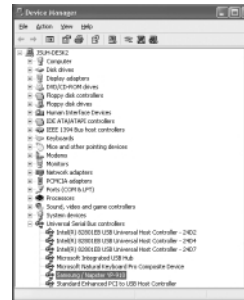
Windows 2000 Professional:

**Control Panel → System → Hardware → Device Manager**

Windows XP Professional:

**Control Panel → Performance and Maintenance → System → Hardware → Device Manager**

If the USB driver is installed, "Samsung/Napster YP-910" will appear under "Universal Serial Bus Controllers."



Note

When updates are available for the software that runs on your Samsung Napster Player, the Napster application will automatically notify you and update your player. This ensures that your Samsung Napster Player is up-to-date with all the latest features and improvements.

# Using Napster with Your Samsung Napster Player

## Searching for and Purchasing Music

Here are some things you should know about tracks purchased on Napster:

- Tracks purchased on Napster are yours to keep and can be burned to CD and seamlessly transferred to your Samsung Napster Player.
- You can have your purchased tracks on up to three computers. To copy your purchased tracks to another computer, use the **[Sync/Restore]** feature on Napster available from the **[My Account]** menu.

### Note

If you try to transfer to your Samsung Napster Player tracks that have not yet been purchased, you will automatically be prompted to purchase the tracks.

To search for and purchase music on Napster:

1. Launch the Napster application by double-clicking the Napster icon on your desktop.

### Note

If you do not have the Napster application, see page 18 for instructions on installing Napster.

2. If there is a specific track you are looking for, simply type the artist, album, or track name in the search field in the upper right corner, select the search type from the drop-down menu, and click **[go]**. If you do not know specifically what you are looking for, you can go to the Browse tab to browse for music by genre.



3. Select the track(s) you would like to purchase.

### Note

You can also purchase an entire album by clicking the provided **[buy album]** link or selecting a track on the album, right-clicking, and choosing **[Buy Album]**.

4. Click the **[buy track]** button, or right-click and choose **[Buy Track(s)]**.

5. A confirmation page with your selected tracks is displayed. Click **[Next]**.
6. If it is your first track purchase and you are not a Premium service member, you will be prompted to enter your credit card information.

Once you purchase the track, the track is automatically downloaded to your Napster Library. Next, drag and drop the selected MP3 files to the Samsung/Napster YP910. Purchased tracks can then be burned to CD and transferred to your Samsung Napster Player.

# Importing Your Existing Music

You can use Napster to import existing WMA or MP3 files into your Napster library. Once these imported tracks are in your Napster Library, you can add these tracks to playlists and transfer them to your Samsung Napster Player.

## Note

If you do not have the Napster Premium service and you attempt to import Napster tracks sent to you by other Napster members, you will be prompted to either purchase the tracks or sign up for the Napster Premium service. Any other protected WMA files will require that you have the correct license for those tracks to import them into Napster.

If you purchase the tracks, you can burn them and transfer them to your Samsung Napster Player. If you sign up for the Napster Premium service, the imported tracks are treated as regular Napster downloads.

## To import WMAs or MP3s into your Napster Library:

1. Select **[Import Track(s) to My Library]** from the **[File]** drop-down menu on the Napster application.
2. Browse to and select the directory where the tracks are located from the **[Folder]** window on the left.
3. Select the particular tracks from the **[Files]** window on the right. To select multiple tracks, hold down the **[Ctrl]** or **[Shift]** keys while selecting, or click **[select all]**.

4. Click the **[OK]** button.



5. A progress bar displays while the tracks are importing.

When the tracks successfully import, they will be stored and accessible from your Napster Library. You will also be prompted to edit the track data for any non-Napster tracks (see next section).

# Editing Track Data

After you import non-Napster WMA or MP3 files into your Napster Library, you can edit the associated track information that affects how the tracks are displayed within Napster and your Samsung Napster Player.

## Note

After you successfully import tracks, you will automatically be prompted to edit the track data.

### To edit track data:

1. Select the track(s).
2. Right-click and select **[Edit Track Data]**.
3. Select the track from the **[Track Filename]** box on the left.



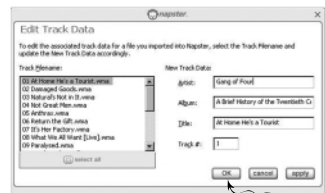
4. Type in or edit the **[Artist]**, **[Album]**, **[Track]** and/or **[Track #]** on the right. The track # specifies the order the track appears within an album.

5. Click the **[apply]** button to apply the changes to that track.
6. When finished, click **[OK]** to apply the changes and close the Edit Track Data screen.

After you edit the track information, the correct data is displayed when you view the tracks in your Napster Library.

### To edit multiple tracks or an entire album at one time:

1. Select the track(s) or album.
2. Right-click and select **[Edit Track Data]**.
3. Click **[Select All]**, or select multiple tracks using the **[Ctrl]** or **[Shift]** keys.



4. Type in or edit the **[Artist]** and/or **[Album]** title. If the box is selected, this change applies to all the tracks selected.
5. Click the **[apply]** button to apply the changes to those tracks or album.
6. Once you edit the Artist and/or Album names for all the selected tracks, you can go back to individually edit the **[Track]** and **[Track #]** for each track.
7. When finished, click **[OK]** to apply the change and close the Edit Track Data screen.

After you edit the track information, the correct data is displayed when you view the tracks in your Napster Library.

# Creating Playlists

## To create a playlist using Napster:

1. Select tracks from within Napster that you would like in your playlist.

### Tip

Hold down the **[Ctrl]** or **[Shift]** key while selecting to select multiple tracks.

2. Click the **[add to playlist]** button.



3. Type in a title for the playlist in the highlighted box.

4. Click **[save]**.

After you create the playlist, you can continue to add songs by selecting the track(s), clicking the add to playlist button, and then selecting the playlist from the **[add to playlist]** screen.

## Additional changes to your playlist can be made by locating the playlist in your Napster Library:

- To rearrange tracks in your playlist, drag and drop the tracks in the desired order.
- To remove tracks from your playlist, right-click and select **[Delete Track(s)]** from the drop-down menu or press the “Delete” key on your keyboard.
- To rename your playlist, right-click on the playlist and select **[Rename Playlist]** from the drop-down menu.

### Note

Changes to playlists cannot be made while the playlist is on your device.

To make changes to a playlist, make them on the playlist that is in your Playlists folder of your Library, and then re-transfer the playlist to your device.

# Transferring Music to Your Samsung Napster Player

Tracks that you purchase through Napster can be transferred seamlessly to your Samsung Napster Player using the Napster application.

## Note

Before transferring, make sure your Samsung Napster Player battery is charged or connected to AC power, otherwise your transfer may not complete successfully.

When you plug your device into your computer through the USB port, the Napster application will automatically recognize it and display it as **Samsung/Napster YP-910** under the menu tree of your Napster Library. If your Samsung Napster Player is not connected or detected, it will display a “Portable Device” icon.

If your Samsung Napster Player is not listed, check your connection and verify that the Samsung Napster Player is detected by your computer. (see page 20).

## Note

If you try to transfer tracks to your Samsung Napster Player that you have not purchased yet, you will automatically be prompted to purchase the tracks.

Make sure your Samsung Napster Player battery is charged or connected to AC power.

To transfer tracks from your Napster Library to your Samsung Napster Player:

1. Locate the track(s) or playlist that you want to transfer in your Library.

## Note

You can transfer tracks from anywhere else in Napster by right-clicking and selecting **[Transfer Track(s) to Portable Device]**.

2. Click and hold the mouse on the track(s) or playlist, then drag the tracks to the listed **Samsung/Napster YP-910** icon in the left window of your Napster Library (refer to the following figure).



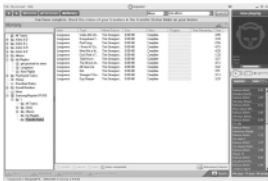
## Note

If the tracks are Napster tracks that you have not already purchased, you will be prompted to purchase them.

*Continued...*



3. The progress of the transfer displays under Transfer Status. To view transfer status, click on the + in front of **Samsung/Napster YP-910** under your Library to expand the sub-folders, and then click on **[Transfer Status]**.



4. When the tracks have finished transferring, the status is listed as Complete.

### Important Note

Do not disconnect the device while the transfer is in progress.

5. Once the transfer is complete, you can disconnect your device by clicking the unplug/eject icon on your Windows taskbar and following the instructions in the message box that appears.

### Important Note

Never unplug the device without first safely disconnecting. To safely disconnect or eject your Samsung Napster Player:

#### Windows 2000

Click the "unplug/eject" icon on your Windows taskbar and follow the instructions in the message box that appears.

#### Windows XP

Click the "Safely Remove Hardware" icon on your Windows taskbar and follow the instructions in the message box that appears.



## Accessing Music on Your Samsung Napster Player

When you connect your Samsung Napster Player to your computer, you will be able to view the music that is currently loaded on your device. You can view your collected artists, albums, and playlists by clicking the **[Samsung/Napster YP-910]** icon in your Library.



Besides removing tracks, you cannot modify the general organizational structure of music on the device. You can play a track by double-clicking on it or by selecting it and clicking the play button.

### Note

You can only play the tracks stored on your device one at a time. You can also only play tracks from the same computer that you used to transfer the tracks to your player.

### Note

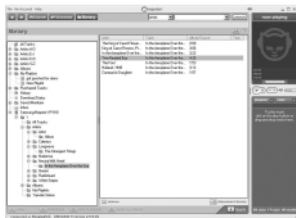
To modify a playlist that is on your Samsung Napster Player, make the changes on the playlist that is in your Playlists folder of your Library, and then retransfer the playlist to your device.

**Continued...**

## Deleting Music on Your Samsung Napster Player

To remove track(s) or playlists from your Samsung/Napster Player:

1. Verify that your **Samsung Napster Player** is connected to your computer and displayed in your Napster Library as **Samsung/Napster YP-910**.
2. Navigate to and locate the track(s) or playlist within the Samsung Napster Player menu tree.



3. Select the track(s) and click the **[remove]** button or press the **[Delete]** key on your keyboard.

### Note

You can delete a playlist, but the tracks will still remain on your player and will need to be deleted separately.

## Managing Your Existing Playlists

If you have an existing playlist on your Samsung Napster Player that you want to modify, you should do this through Napster.

To modify an existing playlist using Napster:

1. Locate the original playlist in your Napster Library (not the one under your Samsung Napster Player).
2. Make the desired changes (see the section on “Creating Playlists”).
3. When you have finished your changes, simply drag and drop the playlist back onto the **Samsung/Napster YP-910** icon in your Napster Library.
4. When prompted to overwrite the playlist on your device, answer **[Yes]**.
5. The modified playlist will now be accessible from your Samsung Napster Player.

# Getting Help with Napster

Additional help for the Napster application is available by clicking on the



button from any screen, or through the Help drop-down menu.

The following help options are available:

- **User Guide:** Comprehensive online instructions for using all the Napster features and functions
- **FAQs:** Answers to frequently asked questions about Napster
- **Customer Support:** If you are having issues or need help using Napster, you can fill out a help request form or find out how to contact Napster Customer Support by selecting Customer Support from the Help drop-down menu.

## Note

Napster Customer Support can assist with software support regarding your Samsung Napster Player, but if you need technical assistance or have an issue related to the device itself, you will need to contact Samsung Customer Support at 1-800-SAMSUNG.

# Using Your Samsung Napster Player Playing music

Make sure the device is fully charged and the earphones are connected.

## Turning Power On and Off

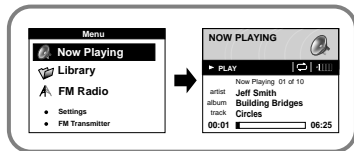
**Power On:** Press and hold the ►|| button to turn on the power.

**Power Off:** While in Pause mode, press and hold the ►|| button to turn off the power.

## Playing Music

Select Now Playing in the menu.

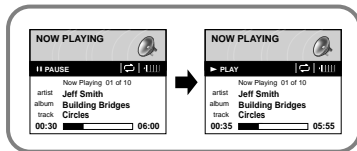
- Playback starts automatically.



## Pausing Music

Press the ►|| button to pause playback.

- While in Pause mode, briefly press ►|| again to resume playback.



# Adjusting Volume

## Adjusting the Volume

Press the UP or DOWN VOLUME button to adjust the volume.

## Note

- The volume can be adjusted in increments between 0 and 20.
- Press once to adjust the volume by one level. Press and hold to increase or decrease the volume in greater increments.



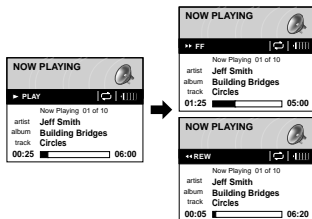
# Searching Within Music Files

## Note

- VBR (Variable Bit Rate) File:  
An MP3 file that has varying compression ratios.
- When playing a VBR file, even if you press ◀◀ within 5 seconds after the start of playback, the previous song may not be played.
- The actual play time and the time displayed on the main unit may differ for VBR files.

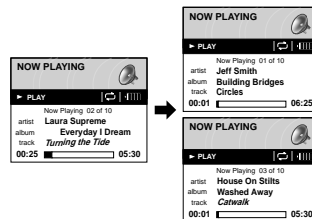
## Searching for Specific Parts in PLAY Mode

- During playback, pull and hold the ◀◀/▶▶ to forward or reverse search the currently playing file.



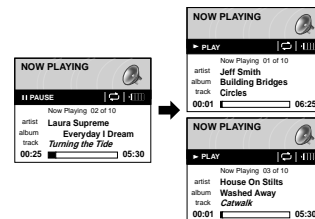
## Searching for Music Files in PLAY Mode.

- During playback, briefly pull the ▶▶ to play the next track in the playlist.
- Briefly pull the ◀◀ to play the previous track in the playlist.
- Press and hold the SELECT button to display the current playlist. Use the SCROLL UP/DOWN buttons to find the song you want and press the ▶▶ to play it.



## Searching for Music Files in PAUSE Mode.

- While in pause mode, pull the ◀◀/▶▶ to move to the previous or next track in the playlist and play it automatically.





# Hold Feature

Use the Hold feature to lock and disable all buttons. The Hold feature is useful to prevent your Samsung Napster Player from being accidentally turned off or on, or to ensure uninterrupted playback.

## Hold Function of the Main Unit

Activate  on the main unit.


- All buttons on the main unit will be disabled, and only the buttons on the remote control can be used for input.
- When you activate the HOLD switch, a "  " appears on the display.
-  appears on the display.

## Hold Function of the Remote Control

Activate  on the remote control.

- All buttons on the remote control will be disabled, and only the buttons on the main unit can be used for input.

## Note

- To turn on the power with the remote control while the main unit is in locked mode, press and hold the  button on the remote control.

# Menu Mode

Press the MENU button to switch to MENU mode.

Use the SCROLL UP/SCROLL DOWN buttons to select the menu item you want, and then briefly press the SELECT button.



- **Now Playing:** Display the song currently playing.
- **Library:** Search and select music to play.
- **FM Radio:** Listen to FM radio
- **Settings:** Change the settings.
- **FM Transmitter:** Listen to your music by transmitting it wirelessly to another FM radio

## Note

- In MENU mode, press the MENU button to exit from the submenu you are in.

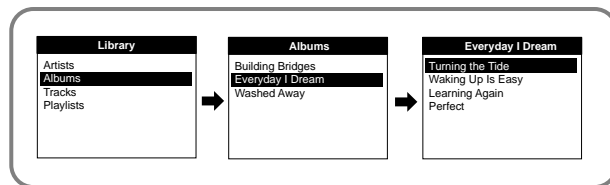
# Browsing Your Music

In the MENU, use the SCROLL UP/SCROLL DOWN buttons to select the Library, and press the SELECT button.

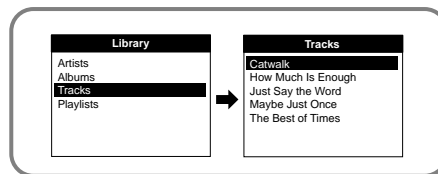
## Searching for and Selecting Music Files



- **Artists:** Shows the artist name from the ID3 tag information stored in the music file.
  - Press the ►|| button on the desired artist name.  
All song titles corresponding to the artist name will be played.
  - If you select an artist's name, song titles that correspond to that artist name will be displayed.  
You can use the SCROLL UP/DOWN buttons to move, and then press the SELECT button to play the selected song.



- **Albums:** Shows the album title from the ID3 tag information stored in the music file.
  - Press the ►|| button on the desired album name.  
All song titles corresponding to the album name will be played.
  - If you select an album name, song titles corresponding to that album will be displayed.  
You can use the SCROLL UP/DOWN buttons to choose a song, and then press the SELECT button to play the selected song.



- **Tracks:** Shows the song title from the ID3 tag information stored in the music file.
  - You can use the SCROLL UP/DOWN buttons to move, and then press the SELECT button to play the selected song.
  - To play all the recently-transferred tracks on your Samsung Napster Player, highlight the Tracks menu item in the Library and press the ►|| button.

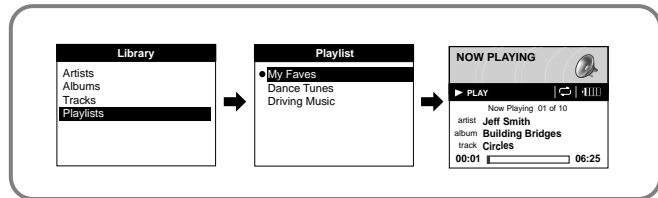
**Continued...**

## Selecting a Playlist

**1** In the Library, use the SCROLL UP/SCROLL DOWN buttons to select Playlists, and then press the SELECT button.

**2** Select the playlist that you want to play, and then press the SELECT button.

- The selected playlist will be played.



## Playing FM Radio

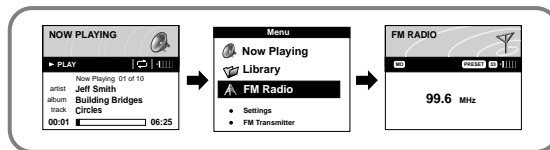
### Switching to FM Radio Mode

Press the MENU button.

Select the FM Radio in the main menu and then press the SELECT button.

Note

- Pressing the **▶||** button will switch between manual tuning mode and preset playback mode.



### Manually Tuning Stations

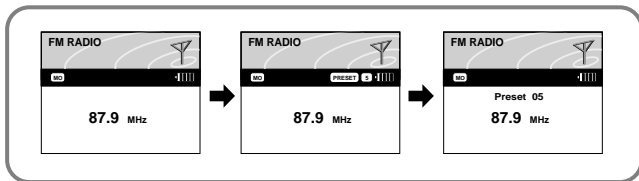
Use the **◀◀/▶▶** button to search for stations and tune the radio.

*Continued...*



## Presetting FM Stations

- 1** When you have tuned a station you want to store in memory as a preset, press and hold the SELECT button. The "PRESET" icon will blink.
- 2** Pull the ◀◀/▶▶ button to select the preset number to which you want to store the station.
- 3** Press the ▶|| button to store the selected station.  
If you decide not to store the station, press the SELECT button again to cancel.

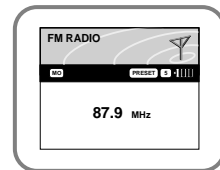


### Note

- You can preset up to 40 stations.
- You can preset a new station into a location that already has a station stored.
- Press the ▶|| button to switch between manual tuning mode and preset playback mode.

## Playing Preset FM Stations

- 1** Press the ▶|| button so that "PRESET" appears on the display panel.
- 2** Use the ◀◀/▶▶ to search for the preset station you want to listen to.



## Deleting Preset FM Stations

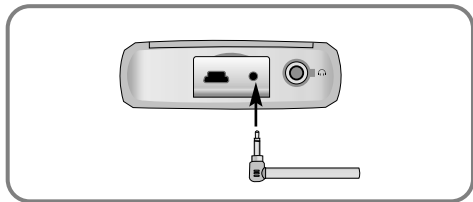
- 1** Press the ▶|| button so that "PRESET" appears on the display panel.
- 2** Use the ◀◀/▶▶ to search for the preset station you want to delete.
- 3** To delete a station, press and hold the SELECT button. The selected station will be deleted and the stations with preset numbers greater than the deleted one will be renumbered accordingly.

# Playing Music Via FM Transmission

This feature allows you to play music stored on your player through your car radio using FM transmission.

## Connecting the FM Transmission Antenna

Plug the FM transmission antenna into the FM transmission antenna jack.

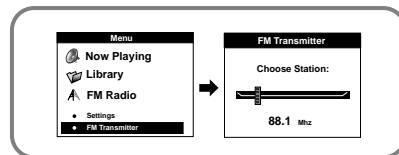


## Note

- You will need to adjust the volume level from your external audio device or FM radio because the volume level of transmission in FM Transmission mode is set to a fixed level.

## Selecting the FM Transmission Frequency

- 1** Press the MENU button to switch to Menu mode, use the SCROLL UP/SCROLL DOWN buttons to select FM Transmitter, and then press the SELECT button.
- 2** Use the SCROLL UP/SCROLL DOWN buttons to set the transmission frequency you want.
  - Press the SELECT button to store the selected frequency.

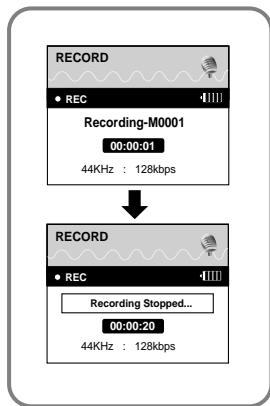


- 3** Set the external audio device's FM frequency to the transmission frequency and play a song. You will now be able to listen to music on your player from the FM radio on your car stereo.

## Recording From FM Radio

**1** Press the REC button while listening to FM radio.

- The current FM broadcast will be recorded into an MP3 file.



**2** Press the REC button again.

- Recording stops and the file is created.
- Files are recorded and renamed M0001, M0002, and so on.
- MP3 files are automatically added to your Library.

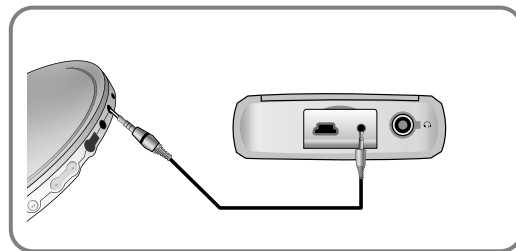
### Note

- If no sound is heard while recording, check if the monitor volume in the recording setting menu is set to "Mute".

## Recording MP3s

Your Samsung Napster Player can be used to record directly from any external audio source such as a CD player, cassette player, home stereo or radio.

**1** While in Music mode, use the Line-In cable to connect the main unit's LINE IN jack and the LINE OUT jack of your external audio device.



### Note

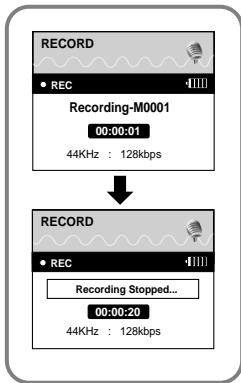
- Before you begin recording, verify that the battery is fully charged, otherwise your recording may not complete successfully.
- Available recording time is displayed at the center right of the unit when recording starts. If there is no remaining capacity, recording stops automatically.

*Continued...*

**2** Press the REC button to start recording.

**3** Press the REC button again stop recording.  
A new MP3 file will be created.

- Files are recorded and renamed M0001.mp3, M0002.mp3, and so on.
- A recorded MP3 file is automatically added to the current playlist.



### Note

- Once you import the track to Napster, you can edit the track name to your preference.
- Set the volume of the external audio device to an appropriate level before you start recording.  
If the volume level is set too high, the sound quality of the recorded file may be poor.

## Uploading Recorded Files to a PC

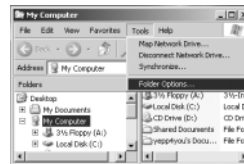
### Changing the "Hidden files and folders" option

In order to upload recorded files to a PC, you must first change the "Hidden files and folders" option on the View tab in the Folder Options.

**1** In Windows Explorer, click [Folder Options] on the [Tools] menu.

**2** Choose the [View tab].

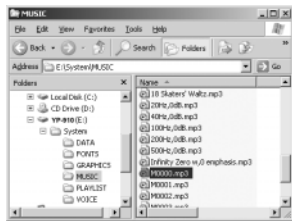
**3** Check the item [Show hidden files and folders].



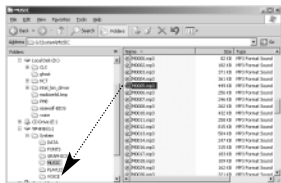
**Continued...**

## Uploading Recorded Files

**1** In Windows Explorer, select the drive indicated by "YP-910", and then click the System and music folders in order.



**2** Drag and drop the recorded file (M\*\*\*.mp3) you want to upload to the PC onto the folder where you want it stored.

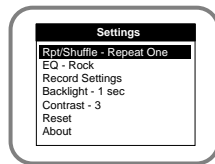





### Caution

Never delete or modify any folders or files in the YP-910 system folder.

## Additional Features Shuffle and Repeat Playback

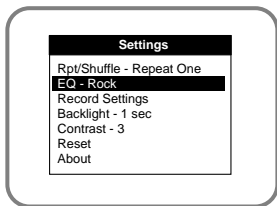
- 1** In the Menu, use the SCROLL UP/SCROLL DOWN buttons to select Settings, and then press the SELECT button.
- 2** Use the SCROLL UP/SCROLL DOWN buttons to select Rpt/Shuffle.
- 3** Press the SELECT button until the desired mode appears.
  - Select the desired mode, and then press the MENU button to go to the main menu.



- **Off:** Select this to listen to songs in the current playlist one at a time in the given order.
- **Shuffle:** Select this to play all stored tracks in random order. 
- **Repeat One:** Select this to repeatedly play just one track. 
- **Repeat All:** Select this to repeatedly play all tracks in the current playlist. 

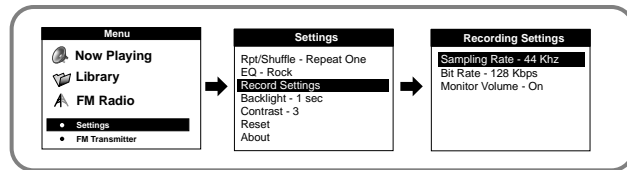
## Equalizer Settings

- 1** In the Menu, use the SCROLL UP/SCROLL DOWN buttons to select Settings, and then press the SELECT button.
- 2** Use the SCROLL UP/SCROLL DOWN buttons to select EQ.
- 3** Press the SELECT button until the desired mode appears.
  - Select the desired mode, and then press the MENU button to go to the main menu.**Off → Rock → Pop → Classical → Jazz → Bass Boost**



## Recording Settings

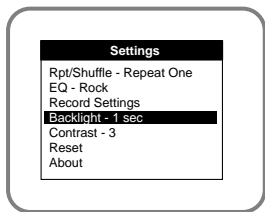
- 1** In the Menu, use the SCROLL UP/SCROLL DOWN buttons to select Settings, and then press the SELECT button.
- 2** Use the SCROLL UP/SCROLL DOWN buttons to select Record Settings, and then press the SELECT button.
- 3** Use the SCROLL UP/SCROLL DOWN buttons to select Sampling Rate, Bit Rate, and Input Level, and then briefly press the SELECT button to make the desired recording setting.
  - Complete the desired setting, and then press the MENU button to go to the main menu.
  - **Sampling Rate:** Each time the SELECT button is pressed, the selection toggles between 32KHz and 44KHz.
  - **Bit Rate:** Each time the SELECT button is pressed, the selection changes as follows: 96 → 128 → 160Kbps.
  - **Monitor Volume:** Each time the SELECT button is pressed, the selection toggles between On and Mute.



# Screen Settings

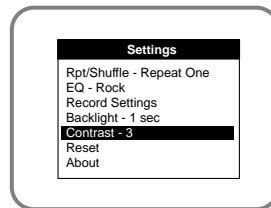
## Backlight

- 1** In the Menu, use the SCROLL UP/SCROLL DOWN buttons to select Settings, and then press the SELECT button.
- 2** Use the SCROLL UP/SCROLL DOWN buttons to select Backlight.
- 3** Press the SELECT button until the desired Backlight On-Time appears.
  - The setting range of Backlight-On Time is 0 to 9 seconds.



## Contrast

- 1** In the Menu, use the SCROLL UP/SCROLL DOWN buttons to select Settings, and then press the SELECT button.
- 2** Use the SCROLL UP/SCROLL DOWN buttons to select Contrast.
- 3** Press the SELECT button until the desired screen contrast appears.
  - The setting range of the contrast, which adjusts the contrast of the screen, is 0 to 7.

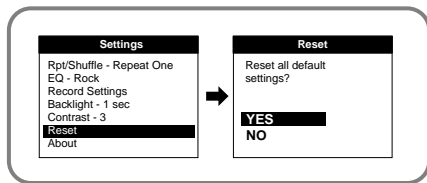


## Restoring Default Settings

**1** In the Menu, use the SCROLL UP/SCROLL DOWN buttons to select Settings, and then press the SELECT button.

**2** Use the SCROLL UP/SCROLL DOWN buttons to select Reset, and then press the SELECT button.

- If you select Reset, all selected settings will be restored to the default setting.



Volume = 9  
Rpt/shuffle = Off  
EQ = Off  
Backlight = 1sec  
Contrast = 3  
DisplaySpeed = Off

Default Settings

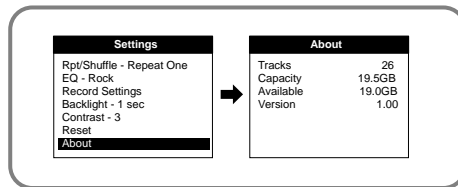
## Player Information

### About

**1** In the Menu, use the SCROLL UP/SCROLL DOWN buttons to select Settings, and then press the SELECT button.

**2** Use the SCROLL UP/SCROLL DOWN buttons to select About, and then press the SELECT button.

- If you select About, you can check the total number of songs stored, total capacity, available capacity, and version information.





# Customer Support

## Troubleshooting

### The player doesn't work. There is nothing showing on the display panel.

- Reset the Player
- Check the battery's power level.
- Make sure the Hold switch is in the off position.

### There is no sound even if I press the Play button in Music mode.

- Check if there are MP3 or WMA files on the Samsung Napster Player.
- Non-playable file formats (e.g. MPEG1 LAYER 1 file) cannot be played.  
Delete the file from your PC before using the player.
- Files that have been downloaded without using the Napster client cannot be played.

### I cannot download files.

- Check the battery's power level.
- Check if the driver is installed correctly on your PC. (see page 21)  
Reinstall the software from the installation CD.
- Check the USB connection between the player and your PC.
- Check if there is the "unplug/eject" or "Safely Remove Hardware" icon located in your icon tray at the bottom of your screen.

### The backlight does not turn on.

- Check the backlight setting.
- The Samsung Napster Player is designed to turn off the backlight automatically for longer operating time when the battery's residual voltage is low.

### When you turn on the player, "Player software needs repair. Please connect player to PC and launch Napster " message is displayed on the display panel.

- Connect the player to your PC, and then run the Napster Client.

### The buttons on the Samsung Napster Player do not respond.

- Check if the Hold switch has been activated.
- Check if the USB cable is connected. Buttons do not work if the USB cable is connected.

### The playback time display during playback does not seem right.

- Check if you are not playing a VBR (Variable Bit Rate) file. VBR files are only partially supported.

### The LCD window is too dark.

- Check the screen brightness control.

### During playback, some unknown characters are displayed on the display panel.

- Samsung Napster Player supports only English and unsupported languages will be indicated by an asterisk ( \* ).

### A "/Noartist/Noalbum" file path appears on the playback screen in place of the selected music file's song title.

- There is no ID3 tag information for the music file. Edit the song title, artist, and album information of the song.

### It takes a long time when I search songs by Song Title, Artist, or Album.

- If there are many music files on your hard disk, it may take longer to read them .

### I have questions about using Napster.

- See the Napster online User Guide and FAQs for troubleshooting help with Napster.

# Specifications

<b>Model</b>	Samsung Napster YP-910 Digital Audio Player
<b>Processor</b>	90MIPS RISC
<b>Internal Memory Capacity</b>	20GB
<b>Built-in Rechargeable Battery Capacity</b>	1300mAh
<b>Voltage</b>	3.7V (Li-Polymer Rechargeable Battery)
<b>Playing time</b>	Maximum Operating Time: 10 hours
<b>Dimensions/Weight</b>	2.54 X 4.19 X 0.78inches/6oz
<b>Case</b>	Aluminum/Plastic
<b>File Transfer Speed</b>	Max. 120 Mbps
<b>Signal to Noise Ratio</b>	90dB with 20KHz LPF (based on 1KHz 0dB)
<b>Earphone Jack Output Power</b>	7mW/CH (16Ω )
<b>Output Frequency Range</b>	20Hz~20KHz
<b>Temperature Range</b>	-5 ~ +35°C (23 ~ 95F)
<b>FM Frequency</b>	87.5 ~ 108.0 MHz
<b>FM Signal to Noise Ratio</b>	45 dB
<b>FM T.H.D</b>	1%
<b>FM Useable Sensitivity</b>	10 dB
<b>File Support</b>	MPEG1/2/2.5 Layer 3 (8Kbps ~ 320Kbps, 8KHz ~ 48 KHz) WMA (48Kbps ~ 192Kbps, 8KHz ~ 48KHz)

# Communications Regulation Information

## FCC

This device complies with part 15 of the FCC Rules. Operation is subject to the following two conditions: (1) This device may not cause harmful interference, and (2) this device must accept any interference received, including interference that may cause undesired operation.

Caution: Any changes or modifications in construction of this device which are not expressly approved by the party responsible for compliance could void the user's authority to operate the equipment

Note: This equipment has been tested and found to comply with the limits for a Class B digital device, pursuant to part 15 of the FCC Rules. These limits are designed to provide reasonable protection against harmful interference in a residential installation. This equipment generates, uses and can radiate radio frequency energy and, if not installed and used in accordance with the instructions, may cause harmful interference to radio communications. However, there is no guarantee that interference will not occur in a particular installation.

If this equipment does cause harmful interference to radio or television reception, which can be determined by turning the equipment off and on, the user is encouraged to try to correct the interference by one or more of the following measures:

- Reorient or relocate the receiving antenna.
- Increase the separation between the equipment and receiver.
- Connect the equipment to an outlet on a circuit different from that to which the receiver is connected.
- Consult the dealer or an experienced radio/TV technician for help.

## Modifications

Any changes or modifications not expressly approved by the grantee of this device could void the user's authority to operate the device.

## Compliance

This product conforms to the following Council Directive:

- Directive 89/336/EEC, 92/31/EEC(EMC)

## Declaration of Conformity

Name: Samsung Electronics Co., Ltd  
Address: 416, Maetan-3Dong, Paldal-Gu, Suwon City, Kyungki-Do, Korea 442-742  
declares under its sole responsibility that the product  
Trade Name: Samsung Electronics Co., Ltd  
Model Number: YP-910  
has been tested according to the FCC/CISPR22/95 requirements for Class B devices and found compliant with the following standards

EMI/EMC: AnSI C63.4 1992, FCC Part 15 Subpart B  
This device complies with part 15 of the FCC Rules.  
Operation is subject to the following two conditions:

1. This device may not cause harmful interference, and
2. This device must accept any interference received, including interference that may cause undesirable operation.

Party Responsible for Product Compliance

Samsung Electronics America  
QA Lab.  
3351 Michelson Dr. Suite #290  
Irvine, CA92612

# Warranty

**Samsung warrants this product as free of defects in material, design and workmanship for a period of twelve(12) months from the original date of purchase.**

If during the period of warranty this product proves defective under normal use and service, you should return the product to the retailer from whom it was originally purchased. The liability of Samsung and its appointed maintenance company is limited to the cost of repair and/or replacement of the unit under warranty. Return of the product for defective reasons should be to the original purchaser; however, Samsung Authorized Dealers and Authorized Service Centers will comply with the warranty on the terms issued to purchasers in the country concerned. For further information relating to the Authorized Service Centers contact; 1-800-SAMSUNG (1-800-726-7864) [www.samsungyepp.com](http://www.samsungyepp.com)

## WARRANTY CONDITIONS:

1. The warranty is only valid when the warranty card is properly completed, and upon presentation of the proof of purchase consisting of original invoice or sales slip confirmation, indicating the date of purchase, dealer's name, model, serial No. and product number. Samsung reserves the right to refuse warranty service if this information has been removed or changed after the original purchase of the product from the dealer.
2. Samsung's obligations are to the repair of the defective part, and at its discretion, replacement of the product (service exchange unit).
3. Warranty repairs must be carried out by an Authorized Samsung Dealer/Service Center. No reimbursement will be made for repairs carried out by non Samsung Centers, and warranty coverage will not be valid for any repairs or damage caused by such repairs.
4. Repair or replacement under the terms of this warranty does not give right to extension to or a new starting of the period of warranty. Repair or direct replacement under the terms of this warranty may be fulfilled with functionally equivalent service exchange units.

5. The warranty is not applicable in cases other than defects in material, design and workmanship. The warranty does not cover the following:

- ◆ Periodic checks, maintenance, repair and replacement of parts due to normal wear and tear.
- ◆ Abuse or misuse, including but not solely limited to the failure to use this product for its normal purpose or in accordance with Samsung's instructions usage and maintenance.
- ◆ Use of the product in conjunction with accessories not approved by Samsung for use with this product.
- ◆ Failure of the product arising from incorrect installation or use not consistent with technical or safety standards in current force, or failure to comply with product manual instructions.
- ◆ Accidents, Acts of God or any cause beyond the control of Samsung caused by lightning, water, fire, public disturbances and improper ventilation.

- ◆ Unauthorized modifications carried out for the product to comply with local or national technical standards in countries for which the Samsung product was not originally designed.
  - ◆ Repairs performed by non-authorized service centers such as opening of the product by a non-authorized person.
  - ◆ The model, serial No. and product number on the product has been altered, deleted, removed or made illegible.
6. This warranty does not affect the consumer's statutory rights nor the consumers rights against the dealer from their purchase/sales agreement.

THERE ARE NO EXPRESS WARRANTIES OTHER THAN THOSE LISTED AND DESCRIBED ABOVE, AND NO WARRANTIES WHETHER EXPRESS OR IMPLIED, INCLUDING, BUT NOT LIMITED TO, ANY IMPLIED WARRANTIES OF MERCHANTABILITY OR FITNESS FOR A PARTICULAR PURPOSE, SHALL APPLY AFTER THE EXPRESS WARRANTY PERIODS STATED ABOVE, AND NO OTHER EXPRESS WARRANTY OR GUARANTY GIVEN BY ANY PERSON, FIRM OR CORPORATION WITH RESPECT TO THIS PRODUCT SHALL BE BINDING ON SAMSUNG. SAMSUNG SHALL NOT BE LIABLE FOR LOSS OF REVENUE OR PROFITS, FAILURE TO REALIZE SAVINGS OR OTHER BENEFITS, OR ANY OTHER SPECIAL, INCIDENTAL OR CONSEQUENTIAL DAMAGES CAUSED BY THE USE, MISUSE OR INABILITY TO USE THIS PRODUCT, REGARDLESS OF THE LEGAL THEORY ON WHICH THE CLAIM IS BASED, AND EVEN IF SAMSUNG HAS BEEN ADVISED OF THE POSSIBILITY OF SUCH DAMAGES. NOR SHALL RECOVERY OF ANY KIND AGAINST SAMSUNG BE GREATER IN AMOUNT THAN THE PURCHASE PRICE OF THE PRODUCT SOLD BY SAMSUNG AND CAUSING THE ALLEGED DAMAGE. WITHOUT LIMITING THE FOREGOING, PURCHASER

• ASSUMES ALL RISK AND LIABILITY FOR LOSS,  
• DAMAGE OR INJURY TO PURCHASER AND  
• PURCHASER'S PROPERTY AND TO OTHERS AND  
• THEIR PROPERTY ARISING OUT OF THE USE,  
• MISUSE OR INABILITY TO USE THIS PRODUCT SOLD  
• BY SAMSUNG NOT CAUSED DIRECTLY BY THE  
• NEGLIGENCE OF SAMSUNG. THIS LIMITED  
• WARRANTY SHALL NOT EXTEND TO ANYONE  
• OTHER THAN THE ORIGINAL PURCHASER OF THIS  
• PRODUCT, IS NONTRANSFERABLE AND STATES  
• YOUR EXCLUSIVE REMEDY.

• Some states do not allow limitations on how long an implied warranty lasts, or the exclusion or limitation of incidental or consequential damages, so the above limitations or exclusions may not apply to you. This warranty gives you specific legal rights, and you may also have other rights which vary from state to state.  
• This product is for personal use only, and is only for use in compliance with the limitations of copyright and other laws.

To obtain warranty service, please contact  
SAMSUNG at:  
Samsung Electronics America, Inc.  
400 Valley Road, Suite 201 Mount Arlington, NJ  
07856  
Tel: (973) 601-6000, Fax: (973) 601-6001  
1-800-SAMSUNG (1-800-726-7864)  
www.samsungyepp.com  
081299